

# Signaling Pathways

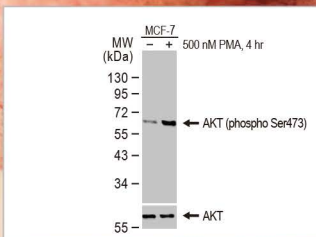
Your Expertise  
Our Antibodies  
Accelerated Discovery

Cell signaling refers to the various sequences of molecular events that mark a cell's response to its environment, whether that entails interaction with another cell or other external cues. In the most fundamental sense, this allows an extracellular stimulus to exert an effect across the cell membrane through its transduction into a biochemical currency that in most cases will affect gene expression and the cell's physiological functioning or identity. A common flow for a signaling pathway involves the binding of a ligand to a receptor, protein modification by enzymes like kinases, assembly of signaling complexes and activation of secondary messengers, and ultimately alterations in the actions of transcription factors or other effectors of the transcriptome or proteome. In summary, cell signaling defines the very notion of a cell being alive.

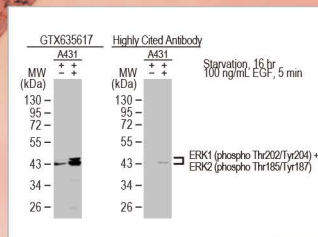
GeneTex offers an extensive catalog of antibody reagents to study different signaling pathways. Please see the selected antibody reagent images below as well as a listing of available posters and product flyers.



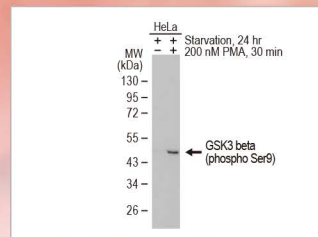
see more



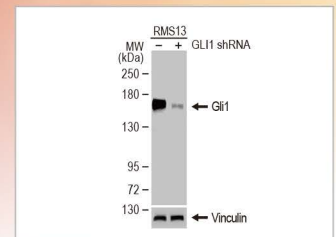
AKT (phospho Ser473) antibody (GTX128414)



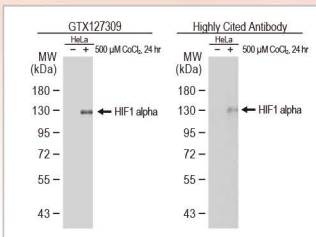
ERK1 (phospho Thr202/Tyr204) + ERK2 (phospho Thr185/Tyr187) antibody [HL173] (GTX635617)



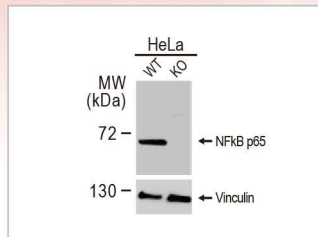
GSK3 beta (phospho Ser9) antibody [HL2671] (GTX639335)



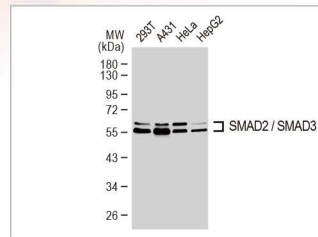
Gli1 antibody [HL247] (GTX635619)



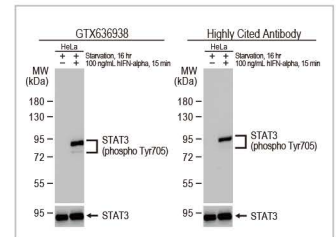
HIF1 alpha antibody (GTX127309)



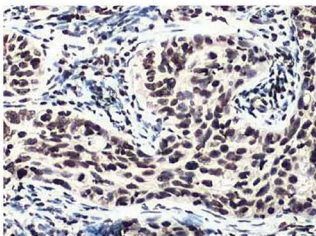
NFkB p65 antibody (GTX102090)



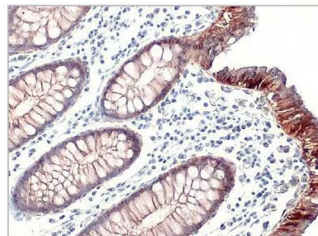
SMAD2 / SMAD3 antibody (GTX111123)



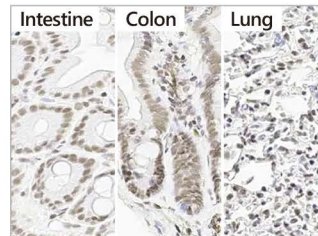
STAT3 (phospho Tyr705) antibody [HL1464] (GTX636938)



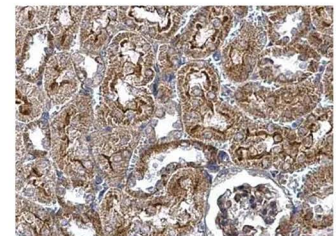
ATM (phospho Ser1981) antibody [HL1062] (GTX636086)



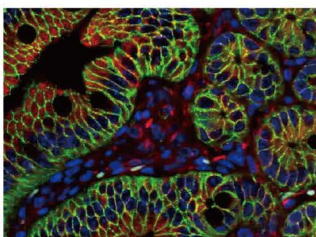
Claudin 3 antibody [HL1527] (GTX637000)



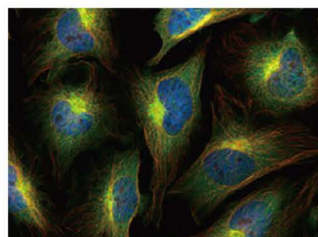
SP1 antibody [HL1396] (GTX636836)



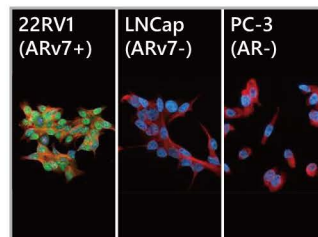
Wnt4 antibody (GTX101085)



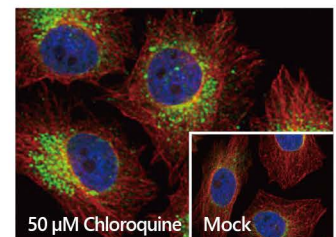
beta Catenin antibody [N1N2-2], N-term (GTX101435)



mTOR antibody [HL2216] (GTX638220)

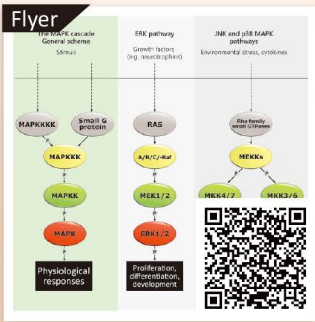


Androgen Receptor (ARv7 Splice Variant) antibody [HL1240] (GTX636639)

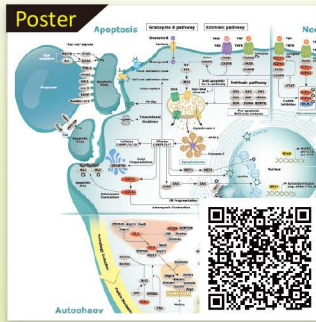


LC3B antibody (GTX127375)

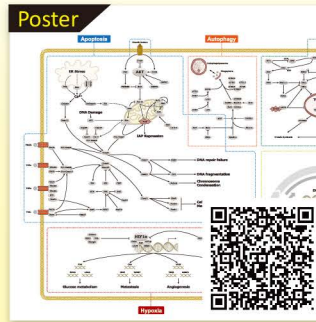




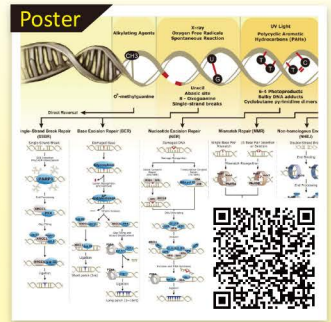
MAPK Pathway



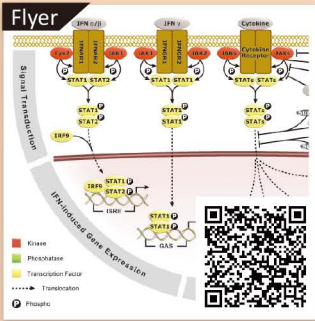
Regulated Cell Death



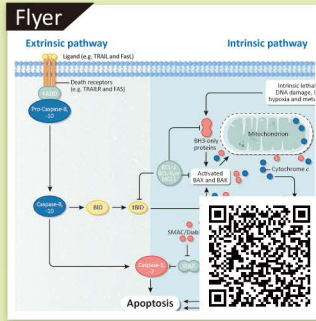
Cancer Signaling



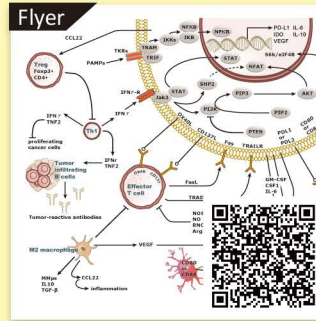
DNA Damage & Repair



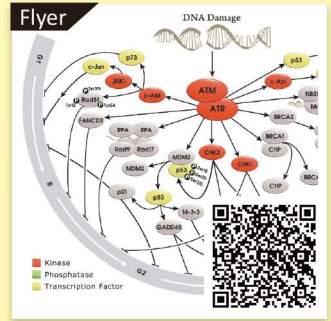
JAK-STAT Pathway



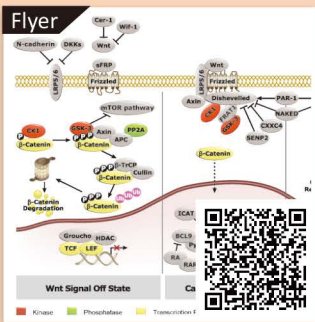
Apoptosis



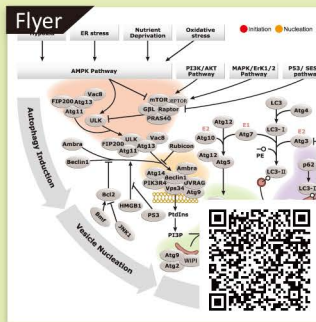
Cancer Immune Checkpoint



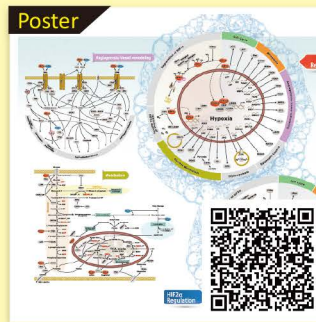
DNA Damage and Repair



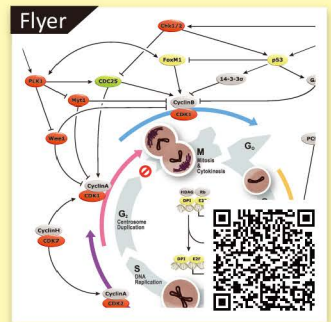
Wnt Signaling



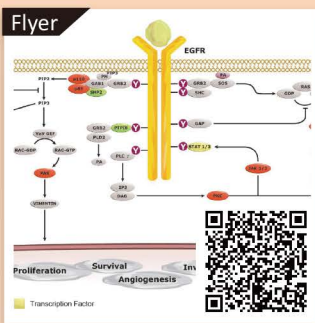
Autophagy / Mitophagy



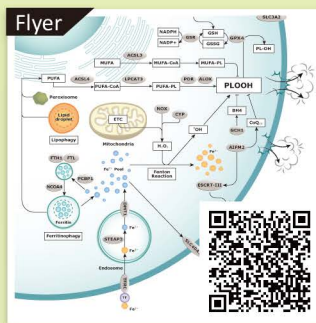
Hypoxia Regulation



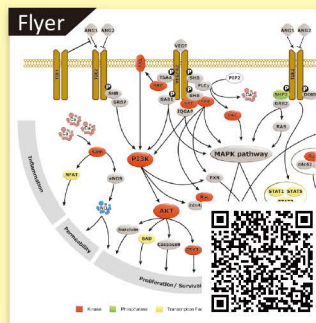
Cell Cycle



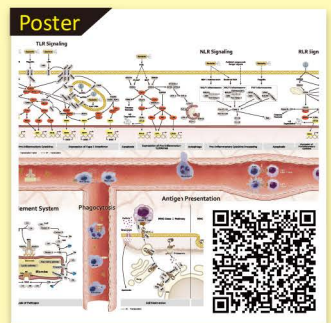
EGFR Signaling



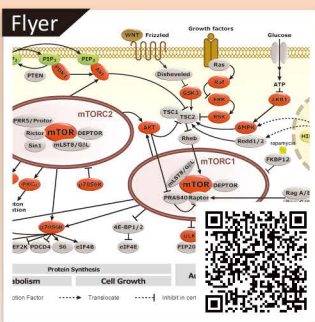
Ferroptosis



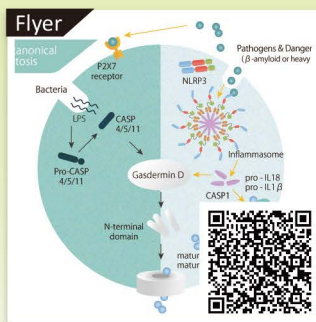
Angiogenesis



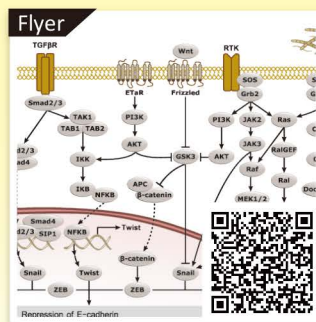
Immune Response



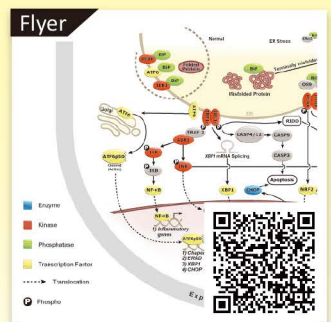
mTOR Signaling Pathway



Pyroptosis / Inflammation



Epithelial-Mesenchymal Transition



Endoplasmic Reticulum Stress



International USA Tel: 886.3.6208988 Tel: 1.949.553.1900 Toll-free: 1.877.436.3839

